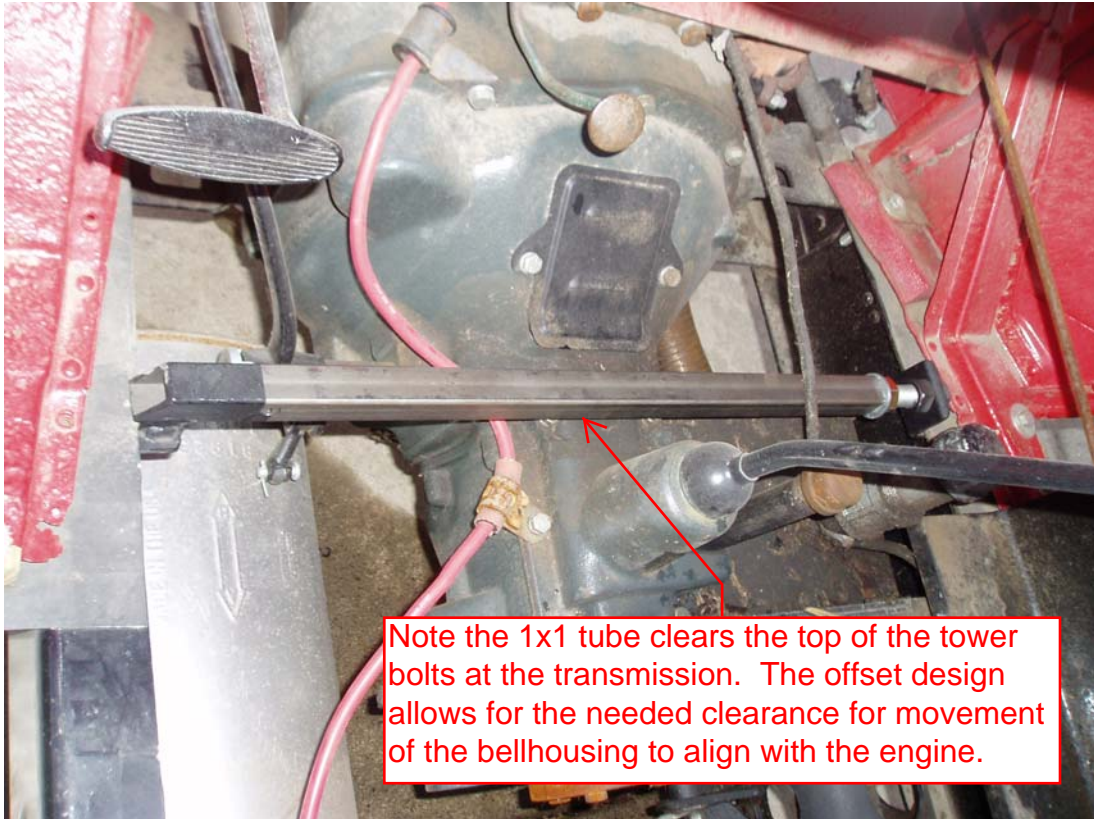
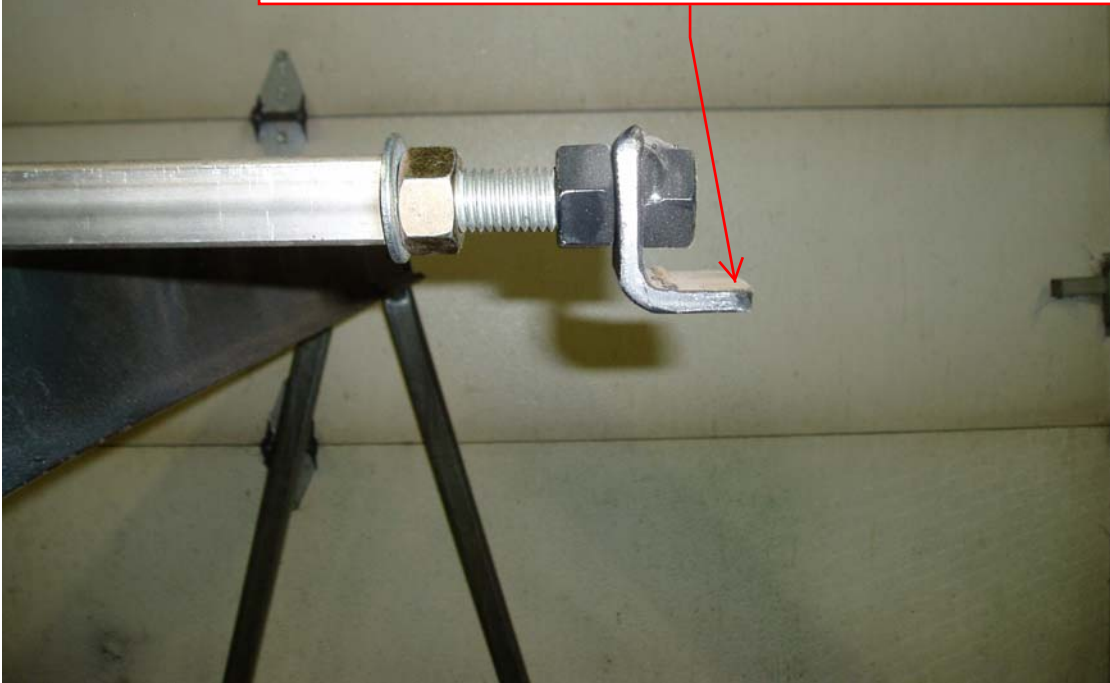


Documents posted on my website are occasionally being revised. Check back to my website for the latest version. Thank you Dave Gerold
www.durableperformance.net

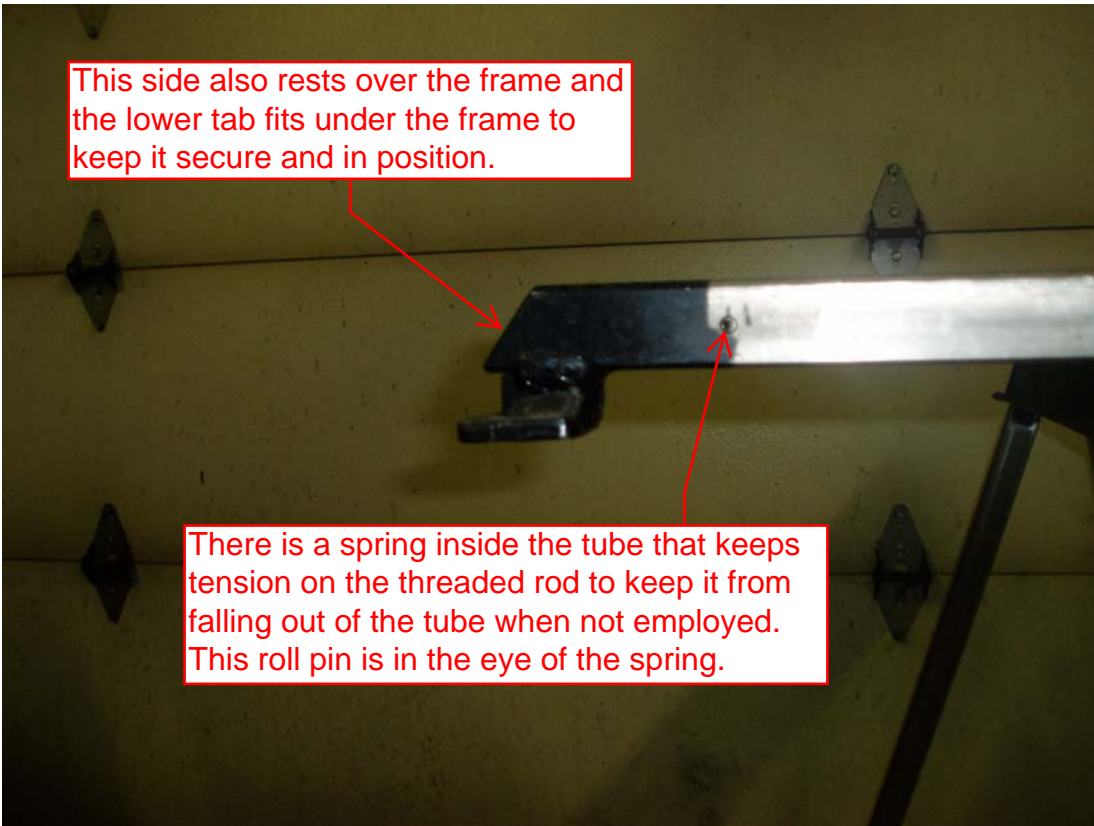


I remove or install about one engine each month and find this spreader saves me a lot of frustration when installing the fresh engine. Most of the time I am working alone and the extra clearance between the rear engine mounts allows the engine to slip right in.

2" piece of angle goes under the frame to keep it in position and keep the threaded rod from turning within the tube. The bottom flat of the nut rests on the top of the frame.



This side also rests over the frame and the lower tab fits under the frame to keep it secure and in position.



There is a spring inside the tube that keeps tension on the threaded rod to keep it from falling out of the tube when not employed. This roll pin is in the eye of the spring.